



**GEODATA BASED INFORMATION SERVICES  
FOR SMALL FARMERS IN BANGLADESH  
(GEOBIS)**

**G4AWEEK**

**Geo-Data for Agriculture and Water – G4AW**

**Netherland Space Office (NSO)**

**The Hague, the Netherlands**

**Presented by:**

**Shah Mohammad Arefin**

**Lal Teer Seed Limited**

**Dhaka, Bangladesh**

**Date: The Hague, 21 September, 2015**

# G4AW Project

## Project Objective

- To develop and implement a sustainable model where spatial and geodata will be used to provide small holder farmers with forecast information and farming advice.
- To improve agricultural productivity, increase farmers' income, forewarn farmers and prepare them from adverse weather conditions and positively influence cropping patterns.



**Target 600,000  
smallholder farmers.**

# G4AW Project

## Project partners: Lead Partner LAL TEER



- *Lal Teer Seed Ltd. is the pioneer vegetable seed research company in Bangladesh.*
- *It is a subsidiary company of Multimode Group and a privately held company with over 2000 directly employees.*
- *LTS was founded in 1998 and since then have played a revolutionary role of producing vegetables year round in Bangladesh and not just during the winter season.*
- *Inclusive business model with 12,000 contract farmers who engage over 200,000 farm workers.*
- **Role in the project: Designed the project concept, management of all partners, create the advisory services and implement all extension services.**

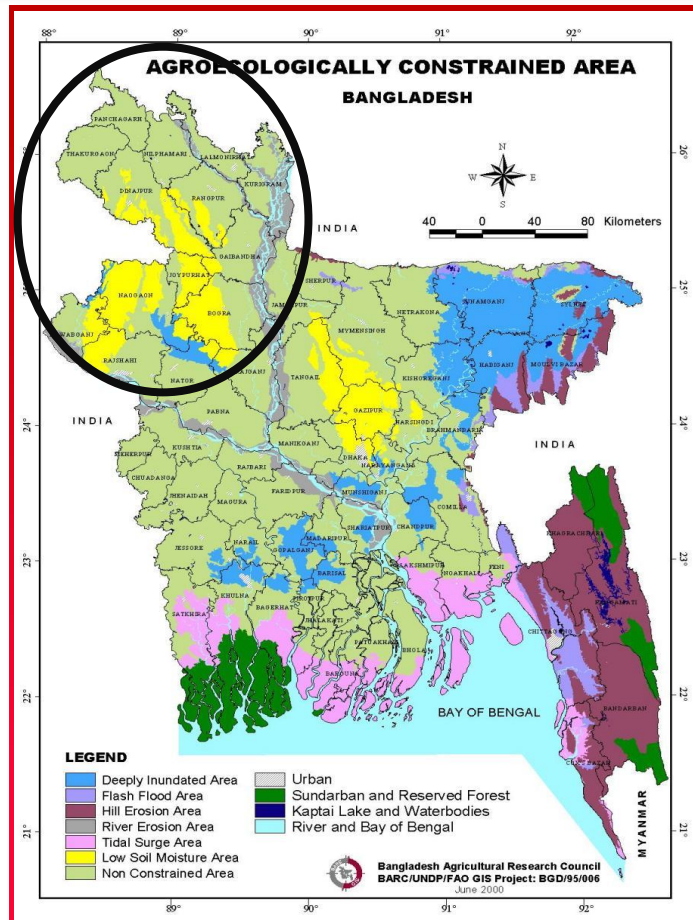
# G4AW Project

## Project partners

- mPower; software, programming, IT solutions, farmer content
- Multisourcing Ltd.: mobile communication
- Alterra: data acquisition and agricultural growth models; agricultural zoning
- NEO: acquisition and processing of satellite data
- ICF: public partner
- Unnayan Onneshan: M&E

# G4AW Project

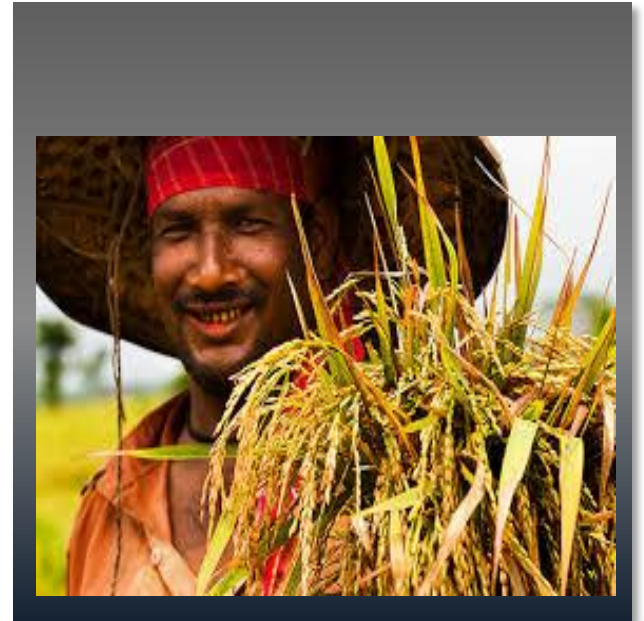
## The Project Area



# G4AW Project

## Farmers' Proposition

- 600,000 farmers to increase their income by producing more or reducing losses.
  - 15% increase in selling prices
  - 20% increase in yield
  - 10% reduction in direct input costs



# G4AW Project

## Information need and services to be provided

- *Use forecast data to provide better farm management services;*
- *Use forecasted data to advise preventive and protective farming solutions;*
- *Monitor crop patterns and soil conditions*
- *Provide true market information for the rural farmers*



# G4AW Project

We, the Lal Teer management, would like to thank the Netherlands Government, particularly the Ministry of Economic Affairs, the Ministry of Education, Culture and Science, the Ministry of Infrastructure and Environment and the Netherlands Organisation for Scientific Research for granting the G4AW project.

Together with our consortium partners from the Netherlands and Bangladesh we are keen to implement this project and introduce innovative satellite based technology in agricultural farming for the benefit of farmers, their communities, the agricultural sector, the environment and the economy.



**THANK YOU!**